

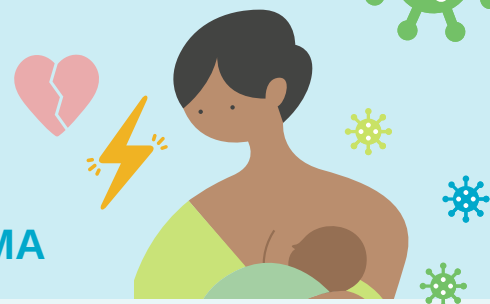
SHARED DECISION-MAKING PROTECTS MOTHERS + INFANTS

DURING COVID-19

KEEPING MOTHERS + INFANTS TOGETHER

Means balancing
the risks of...

- **HORIZONTAL INFECTION**
- **SEPARATION AND TRAUMA**



EVIDENCE

We encourage families and clinicians to remain diligent in learning **up-to-date evidence**.

PARTNERSHIP

What is the best
for this unique dyad?

SHARED DECISION-MAKING

- S**EEK PARTICIPATION
- H**ELP EXPLORE OPTIONS
- A**SSESS PREFERENCES
- R**EACH A DECISION
- E**VALUATE THE DECISION



TRAUMA-INFORMED

Both parents and providers
are confronting significant...

- **FEAR**
- **GRIEF**
- **UNCERTAINTY**

LONGITUDINAL DATA

We need to understand more about outcomes for mothers
and infants exposed to COVID-19, with special attention to:

- **MENTAL HEALTH**
- **POSTPARTUM CARE DELIVERY**



NEW DATA EMERGE DAILY. NANN AND NPA ENCOURAGE PERINATAL CARE PROVIDERS TO ENGAGE IN CANDID CONVERSATIONS WITH PREGNANT PARENTS PRIOR TO DELIVERY REGARDING RISKS, BENEFITS, LIMITATIONS, AND REALISTIC EXPECTATIONS.

Partnering for patient-centered care
when it matters most.

nann.org nationalperinatal.org



National
Association of
Neonatal
Nurses

National
Perinatal
Association